

# Wellbeing Theme Board Exception Report

# APPENDIX 2

NI 112 Percentage change in under-18 conceptions (per 1000 girls aged 15-17 as compared with the 1998 baseline) (LAA)			
The change in the rate of under-18 conceptions per 1,000 girls aged 15-17 years resident in the area for the current calendar year, as compared with the 1998 baseline rate, shown as a percentage of the 1998 rate.			
2009 - 2010			
	Value	Target	Status
2009/10	-15.1%	-18.1%	🔴
2010 - 2011			
	Value	Target	Status
Q1 2010/11	-13.3%	-55.0%	🔴
Q2 2010/11	-15.9%	-55.0%	🔴
2010/11	-15.9%	-55.0%	🔴
🔴		↑	
Red			
<p>-15.9% is based on 2008 actual data. There were 52.4 conceptions per 1,000 in 2008 compared to 62.3 in 1998, the baseline year. This decrease was greater than the England average of -13%. The target for 2010 (2011-12) is to reduce the number of conceptions from the 1998 baseline rate by -55% ( 28 per 1,000 conceptions). Work on reducing teenage conceptions and teenage pregnancies and supporting teenage parents is overseen by the Teenage Pregnancy Executive Board. A Teenage Pregnancy Prevention and Support Strategy 2010 – 2013 is under development.</p>			

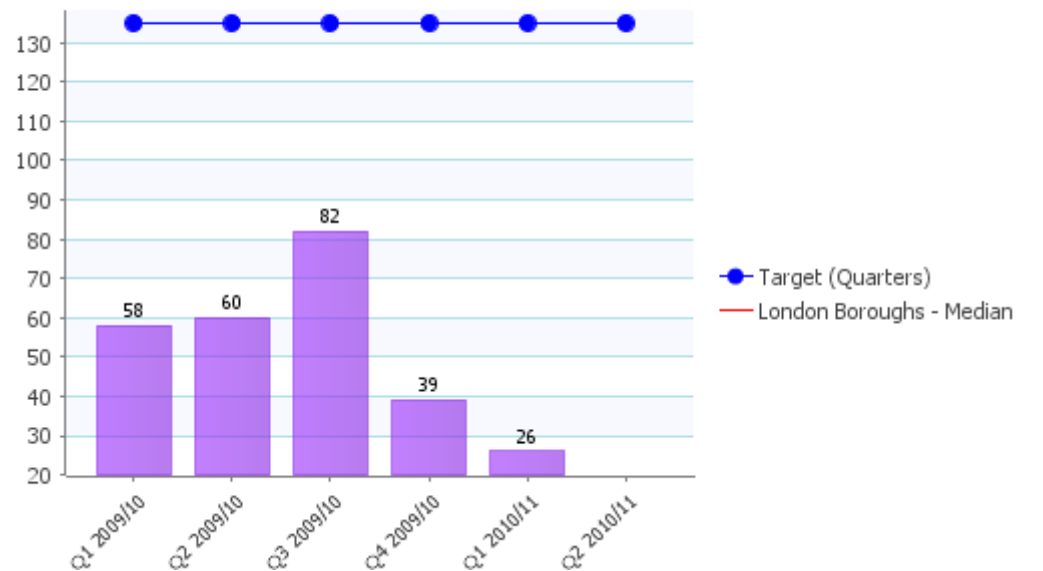
**CY02\_P\_N0112 Percentage change in under-18 conceptions (per 1000 girls aged 15-17 as compared with the 1998 baseline) (LAA)**

Quarter	Actual Value (%)	Target (%)	London Boroughs - Median (%)
Q1 2009/10	-2.9%	-18.1%	-13.3%
Q2 2009/10	-8.8%	-18.1%	-13.3%
Q3 2009/10	-15.1%	-18.1%	-13.3%
Q4 2009/10	-13.3%	-18.1%	-13.3%
Q1 2010/11	-15.9%	-55.0%	-13.3%
Q2 2010/11	-15.9%	-55.0%	-13.3%

**NI 40**    **Number of drug users recorded as being in effective treatment against 2007/08 baseline. (LAA)**

This indicator shows the change in the total number of drug users, using crack and/or opiates recorded as being in effective treatment, when compared with the number of drug users using crack and/or opiates recorded as being in effective treatment in the baseline year of 2007/8.

**PP02\_P\_N0040 Number of drug users recorded as being in effective treatment against 2007/08 baseline. (LAA)**



2009 - 2010			
	Value	Target	Status
2009/10	39	135	Red Octagon
2010 - 2011			
	Value	Target	Status
Q1 2010/11	26	135	Red Octagon
Q2 2010/11		135	
2010/11	35	135	Red Octagon

  
Red



Performance relates to the 12 month period between July 2009 and June 2010.

Although there was a short surge of new clients in Q1, the projection show only 26 more clients in effective treatment by Sept (YTD) in comparison to same time last year.

The projection for Q2 shows Haringey is 33 clients below the YTD target. The projection is done by looking at the number of new clients in Q2 and applying the percentage in effective treatment in Q1 to the Q2 cohort. Considering we are starting from a lower baseline for missing the target last year, the end of year performance for 2010-11 will be a challenge.

In the monthly performance meetings with the treatment agencies it has become apparent that most new clients are using cannabis and not crack or opiates, including clients reached through Probation and Mental Health services. Those who do use crack or opiates are already familiar with drug treatment services in Haringey. In this context it should be also be noted that the number of new clients in contact with drug treatment rose from the baseline 807 in 2003-4 to 1468 in 2008-9 (82%) But the increase has stalled since 2009-10 (1418 during last year). This can be expected since many more would have received treatment whilst the sector grew in size and funding. The National Drug Treatment Agency also reports that nationally the number of younger people coming to treatment are no longer using crack or opiates to the same extent.

Conversely, the percentage of clients in effective treatment has continuously improved (from 83% in Sept 2009 to 86% in Sept 2010). Clients completing treatment successfully (ie drug free) YTD is at 49% in comparison to 32% in London (and up from 41% from the same time last year).

DAAT and the commissioned agencies are working hard to find new clients eg. by:

- \* Engagement and access steering group (chaired by Eban, treatment agency in the North East of Haringey)
- \* CRI (agency who diverts drug using offenders into drug treatment) is working closely with Probation to engage more clients, however most use cannabis and are also reluctant to disclose drug use.
- \* BUBIC extended outreach in the evenings but they report that the last two months have been very quiet
- \* A worker at A & E in North Middlesex is doing outreach to refer clients to both alcohol and drug treatment
- \* Training sessions with GPs so that they can better identify drug and alcohol use (eg. related to depression) and refer to appropriate services
- \* Dual is doing outreach with mental health teams

Also, the performance is monitored monthly and actions discussed at the performance monitoring group chaired by the DAAT.

Figure accurate as at October 2010 report (Published on [www.ndtms.net](http://www.ndtms.net). This is a live dataset therefore figures may change month by month if there are any subsequent corrections to data).

**NI 156** Number of households living in temporary accommodation (LAA)

This indicator measures the numbers of households living in temporary accommodation provided under the homelessness legislation.

2009 - 2010

	Value	Target	Status
2009/10	3,547	3,552	✔

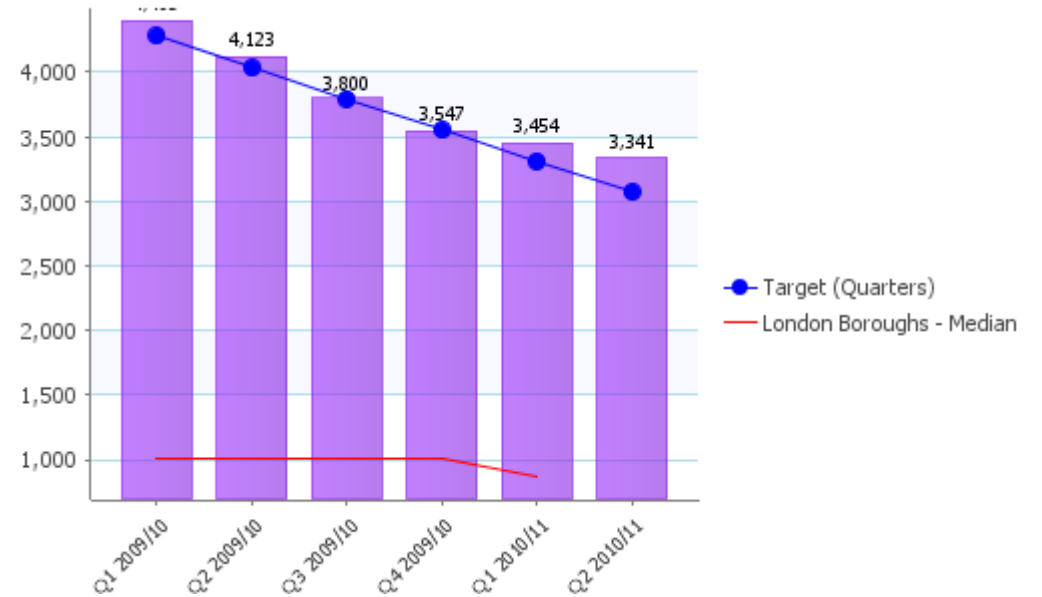
	Value	Target	Status
Q1 2010/11	3,454	3,310	⚠
Q2 2010/11	3,341	3,073	⚠
2010/11	3,305	2,915	⚠



Red



**UE06\_H\_N0156 Number of households living in temporary accommodation (LAA)**



Work to reduce numbers in TA continues. There have been particular problems in the last quarter in securing alternative supply in the private sector. This has meant that more households have had to remain in temporary accommodation. Efforts are continuing to secure alternative supply which will assist the continued drive to reduce numbers, although this is becoming increasingly difficult as suppliers continue to explore the market for a range of options.

**L0222 (LAA) Immunisation rate for children aged 2 who have been immunised for measles, mumps and rubella (MMR) (LAA local)**

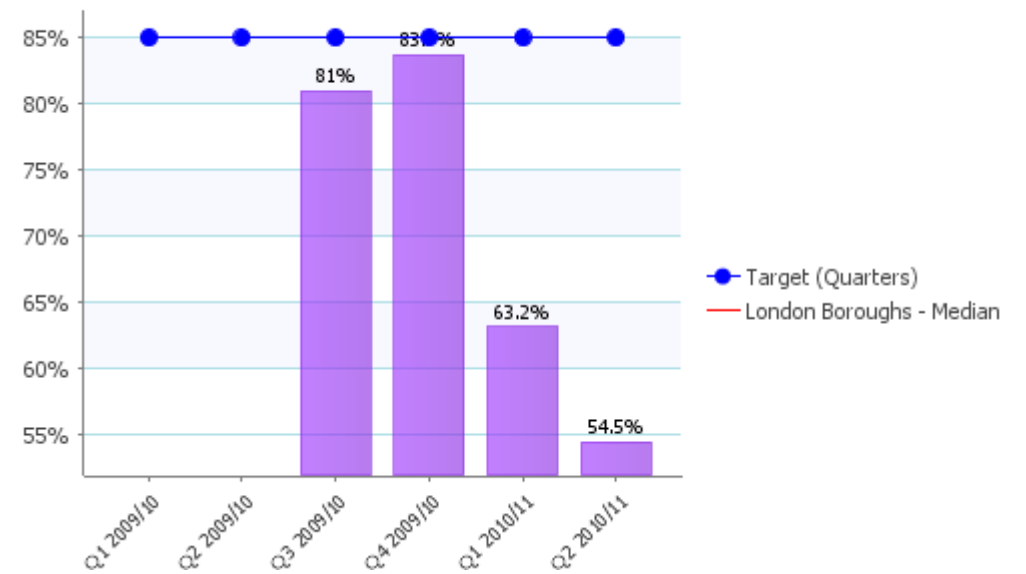
2009 - 2010			
	Value	Target	Status
2009/10	85.3%	85%	✓
2010/11			
	Value	Target	Status
Q1 2010/11	63.2%	85%	✗
Q2 2010/11	54.5%	85%	✗
2010/11		90%	

✗

**Red**

↓

**CY02\_H\_L0222 Immunisation rate for children aged 2 who have been immunised for measles, mumps and rubella (MMR) (LAA local)**



Due to the existing manual data collection process not all immunisation records were collected in Q1 or Q2 which resulted in the drop in performance seen in the graph above. A automated data extraction tool is being purchased to ensure 100% data collection which will improve rates and provide mechanism to monitor and drive improvement through targeted performance management and support.